

Client Name: WUHAN SUNON ELECTRONICS CO.,LTD
 Client Address: YOUGANG VILLAGE QIANCHUAN STREET , HUANGPI DISTRICT, WUHAN , HUBEI PROVINCE

Sample Name: quartz watch movement

Tested Basic Model No.: SL68

Tested Extended Model No.: PE90

Client Ref. Information: PE11, SL39, SL25, SL28, PE39, PE21, PE22, PE32, PE33, PE41, PE45, PE42, PE46, PE48, PE49, SP68, SP25, SP28, PE10, PE25, PE26, PE27, PE28, PE50, PE60, PE70, PE80, PE81, PE90, PE93, HC21, HC32, HC33, ZL11, ZL12, ZL18, ZL20, ZL02, PE51, PE61, PE91

The above sample(s) and information were provided by the client.

SGS Job No.: GZP23-015192

Sample Receiving Date: Oct 07, 2023

Verification Period: Oct 07, 2023 ~ Oct 17, 2023

Verification Requested: With reference to RoHS Directive (EU) 2015/863 amending 2011/65/EU.

Verification Method(s): Please refer to next page(s).

Verification Result(s): Please refer to next page(s).

Test Result Summary:

Test Items	Conclusion
EU RoHS Directive (EU) 2015/863 amending Annex II to Directive 2011/65/EU- Lead, Mercury, Cadmium, Hexavalent chromium, Polybrominated biphenyls (PBBs), Polybrominated diphenyl ethers (PBDEs), Bis(2-ethylhexyl) phthalate (DEHP), Butyl benzyl phthalate (BBP), Dibutyl phthalate (DBP) and Diisobutyl phthalate (DIBP)	Pass

Signed for and on behalf of
 SGS-CSTC Standards Technical Services Co., Ltd. Guangzhou Branch

Tyler Zhang

Tyler-Y Zhang
 Approved Signatory

scan to see the report



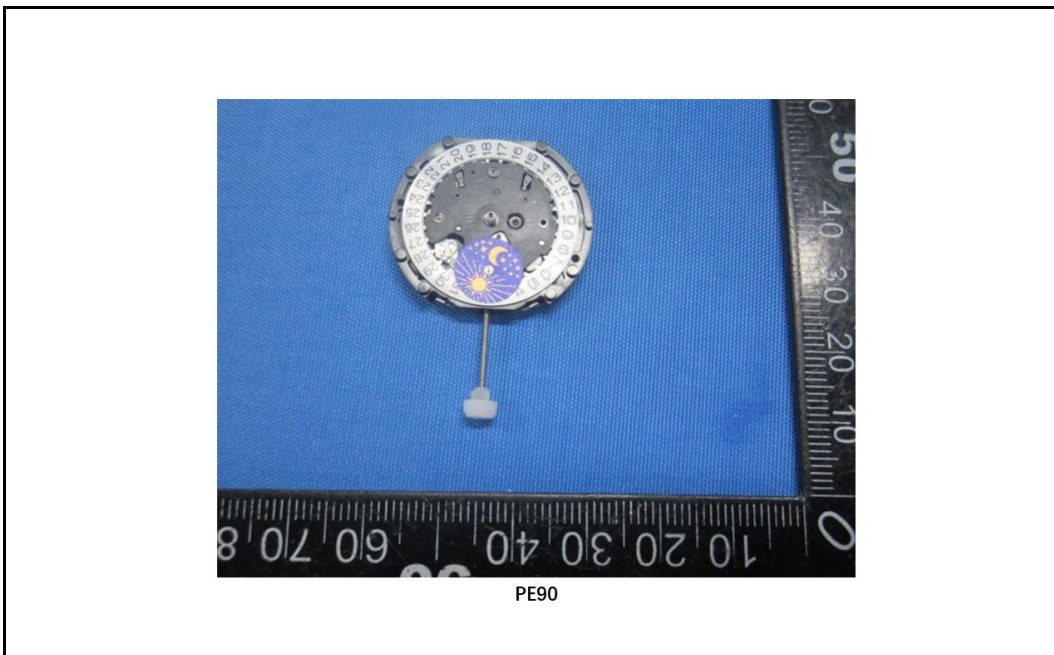
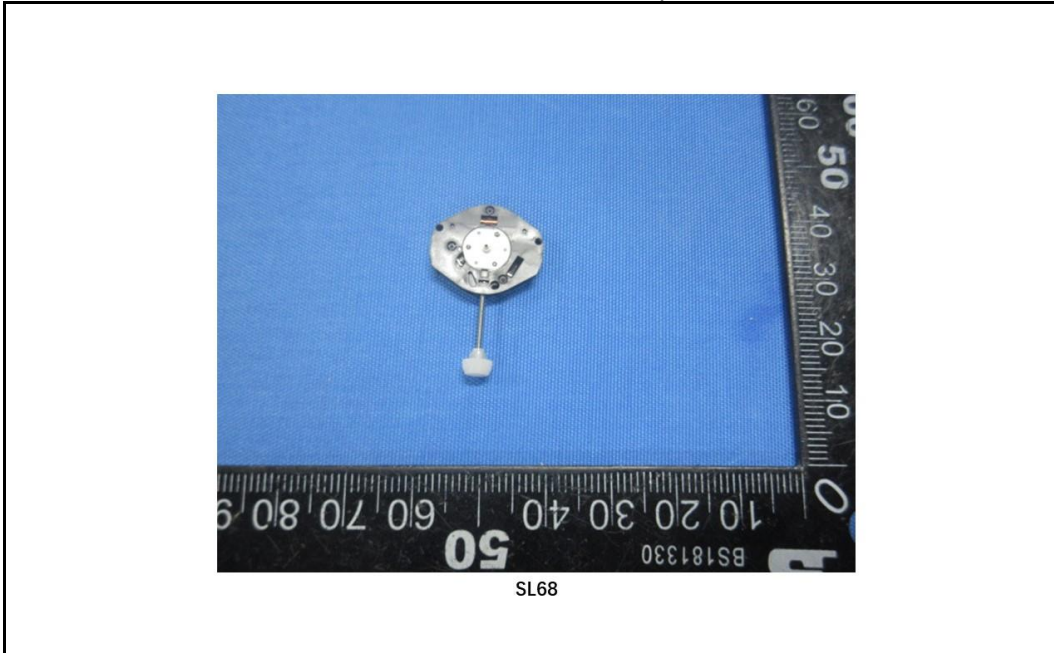
E334A67E



Unless otherwise agreed in writing, this document is issued by the Company subject to its General Conditions of Service printed overleaf, available on request or accessible at <https://www.sgs.com/en/Terms-and-Conditions>. Attention is drawn to the limitation of liability, indemnification and jurisdiction issues defined therein. Any holder of this document is advised that information contained hereon reflects the Company's findings at the time of its intervention only and within the limits of Client's instructions, if any. The Company's sole responsibility is to its Client and this document does not exonerate parties to a transaction from exercising all their rights and obligations under the transaction documents. This document cannot be reproduced except in full, without prior written approval of the Company. Any unauthorized alteration, forgery or falsification of the content or appearance of this document is unlawful and offenders may be prosecuted to the fullest extent of the law. Unless otherwise stated the results shown in this test report refer only to the sample(s) tested.

Attention: To check the authenticity of testing /inspection report & certificate, please contact us at telephone: (86-755) 8307 1443, or email: CN.Doccheck@sgs.com

Photo of Submitted Sample



Verification Method(s):

1. With reference to IEC 62321-2:2021, disassembly and disjointment were performed for the submitted samples.



SGS-CSTC Standards Technical Services Co., Ltd.
Guangzhou Branch Technical Laboratory

Unless otherwise agreed in writing, this document is issued by the Company subject to its General Conditions of Service printed overleaf, available on request or accessible at <https://www.sgs.com/en/Terms-and-Conditions>. Attention is drawn to the limitation of liability, indemnification and jurisdiction issues defined therein. Any holder of this document is advised that information contained hereon reflects the Company's findings at the time of its intervention only and within the limits of Client's instructions, if any. The Company's sole responsibility is to its Client and this document does not exonerate parties to a transaction from exercising all their rights and obligations under the transaction documents. This document cannot be reproduced except in full, without prior written approval of the Company. Any unauthorized alteration, forgery or falsification of the content or appearance of this document is unlawful and offenders may be prosecuted to the fullest extent of the law. Unless otherwise stated the results shown in this test report refer only to the sample(s) tested.
Attention: To check the authenticity of testing /inspection report & certificate, please contact us at telephone: (86-755) 8307 1443, or email: CN.Doccheck@sgs.com

No.198, Kezhu Road, Science City, Economic & Technological Development Area, Guangzhou, Guangdong, China 510663
中国·广东·广州高新技术产业开发区科学城科珠路198号 邮编: 510663

t (86-20) 82155555 www.sgsgroup.com.cn
t (86-20) 82155555 sgs.china@sgs.com

2. With reference to IEC 62321-1:2013, tests were performed for the samples indicated by the photos in this report.

(1) With reference to IEC 62321-3-1:2013, screening by EDXRF spectroscopy.

(2) Wet chemical test method: With reference to IEC 62321-4:2013+A1:2017, IEC62321-5:2013, IEC 62321-7-1:2015, IEC 62321-7-2:2017, ISO 17075-1:2017, IEC 62321-6:2015 and IEC62321-8:2017 , analyzed by ICP-OES,UV-Vis and GC-MS.



SGS-CSTechnical Services Co., Ltd.
Guangzhou Branch Technical Laboratory

Unless otherwise agreed in writing, this document is issued by the Company subject to its General Conditions of Service printed overleaf, available on request or accessible at <https://www.sgs.com/en/Terms-and-Conditions>. Attention is drawn to the limitation of liability, indemnification and jurisdiction issues defined therein. Any holder of this document is advised that information contained hereon reflects the Company's findings at the time of its intervention only and within the limits of Client's instructions, if any. The Company's sole responsibility is to its Client and this document does not exonerate parties to a transaction from exercising all their rights and obligations under the transaction documents. This document cannot be reproduced except in full, without prior written approval of the Company. Any unauthorized alteration, forgery or falsification of the content or appearance of this document is unlawful and offenders may be prosecuted to the fullest extent of the law. Unless otherwise stated the results shown in this test report refer only to the sample(s) tested.
Attention: To check the authenticity of testing /inspection report & certificate, please contact us at telephone: (86-755) 8307 1443, or email: CN.Doccheck@sgs.com

No.198, Kezhu Road, Science City, Economic & Technological Development Area, Guangzhou, Guangdong, China 510663
中国·广东·广州高新技术产业开发区科学城科珠路198号 邮编: 510663

t (86-20) 82155555 www.sgsgroup.com.cn
t (86-20) 82155555 sgs.china@sgs.com

Verification Part Description:

SN ID	Sample No.	SGS Sample ID	Description
SN1	A1	CAN23-0110393-0001.C001	SL68- White plastic part
SN2	A2	CAN23-0110393-0001.C002	SL68- Silvery metal shaft
SN3	A3	CAN23-0110393-0001.C003	SL68- Black plastic shell
SN4	A4	CAN23-0110393-0001.C004	SL68- Silvery metal sheet
SN5	A5	CAN23-0110393-0001.C005	SL68- Transparent plastic part
SN6	A6	CAN23-0110393-0001.C006	SL68- Silvery metal sheet
SN7	A7	CAN23-0110393-0001.C007	SL68- Silvery metal sheet
SN8	A8	CAN23-0110393-0001.C008	SL68- Copper-colored enamel-insulated wire
SN9	A9	CAN23-0110393-0001.C009	SL68- Silvery metal sheet
SN10	A10	CAN23-0110393-0001.C010	SL68- Silvery body
SN11	A11	CAN23-0110393-0001.C011	SL68- Green "PCB"
SN12	A12	CAN23-0110393-0001.C012	SL68- Silvery metal solder
SN13	A13	CAN23-0110393-0001.C013	PE90- Purple surfaced metal sheet with brown printing
SN14	A14	CAN23-0110393-0001.C014	PE90- White plastic ring with black printing
SN15	A15	CAN23-0110393-0001.C015	PE90- Black plastic sheet
SN16	A16	CAN23-0110393-0001.C016	PE90- Silvery metal sheet
SN17	A17	CAN23-0110393-0001.C017	PE90- White plastic part
SN18	A18	CAN23-0110393-0001.C018	PE90- White plastic gear
SN19	A19	CAN23-0110393-0001.C019	PE90- White plastic gear
SN20	A20	CAN23-0110393-0001.C020	PE90- Silvery metal sheet
SN21	A21	CAN23-0110393-0001.C021	PE90- Silvery metal solder
SN22	A22	CAN23-0110393-0001.C022	PE90- Black "PCB"
SN23	A23	CAN23-0110393-0001.C023	SL68- Silvery metal solder



Verification Result(s):

In accordance with the result of material risk assessment, the following disjointed parts in the submitted sample have been verified. (Unless otherwise specified, the unit is mg/kg).

Test Item(s)	A1	A2	A3	A4	A5	A6	A7	A8
Cd	BL	BL	BL	BL	BL	BL	BL	BL
Pb	BL	BL	BL	BL	BL	BL	BL	BL
Hg	BL	BL	BL	BL	BL	BL	BL	BL
Cr(VI)▼	BL	ND	BL	ND	BL	BL	ND	BL
PBBs	BL	---	BL	---	BL	---	---	BL
PBDEs	BL	---	BL	---	BL	---	---	BL
DBP	BL	---	BL	---	BL	---	---	BL
BBP	BL	---	BL	---	BL	---	---	BL
DEHP	BL	---	BL	---	BL	---	---	BL
DIBP	BL	---	BL	---	BL	---	---	BL
Conclusion	PASS	PASS	PASS	PASS	PASS	PASS	PASS	PASS

Test Item(s)	A9	A10	A11	A12	A13	A14	A15	A16
Cd	BL	BL	BL	BL	BL	BL	BL	BL
Pb	BL	BL	BL	BL	BL	BL	BL	BL
Hg	BL	BL	BL	BL	BL	BL	BL	BL
Cr(VI)▼	ND	<100*	BL	BL	ND	BL	BL	BL
PBBs	---	BL	ND	---	---	BL	BL	---
PBDEs	---	BL	ND	---	---	BL	BL	---
DBP	---	BL	ND	---	---	BL	BL	---
BBP	---	BL	ND	---	---	BL	BL	---
DEHP	---	BL	ND	---	---	BL	BL	---
DIBP	---	BL	ND	---	---	BL	BL	---
Conclusion	PASS	PASS	PASS	PASS	PASS	PASS	PASS	PASS

Test Item(s)	A17	A18	A19	A20	A21	A22	A23
Cd	BL	BL	BL	BL	BL	BL	BL
Pb	BL	BL	BL	BL	BL	BL	BL
Hg	BL	BL	BL	BL	BL	BL	BL
Cr(VI)▼	BL	BL	BL	ND	BL	BL	BL
PBBs	BL	BL	BL	---	---	ND	---
PBDEs	BL	BL	BL	---	---	ND	---
DBP	BL	BL	BL	---	---	ND	---
BBP	BL	BL	BL	---	---	ND	---
DEHP	BL	BL	BL	---	---	ND	---
DIBP	BL	BL	BL	---	---	ND	---
Conclusion	PASS	PASS	PASS	PASS	PASS	PASS	PASS



Notes:

- (1) Interpretation of screening results by X-ray fluorescence spectrometry (XRF):
 (a) Screening limits in mg/kg for regulated elements in various matrices according to IEC 62321-1:2013 Annex A as below table.

Element	Polymer	Metal	Composite Materials
Cd	$BL \leq (70-3\sigma) < X < (130+3\sigma) \leq OL$	$BL \leq (70-3\sigma) < X < (130+3\sigma) \leq OL$	$LOD < X < (150+3\sigma) \leq OL$
Pb	$BL \leq (700-3\sigma) < X < (1300+3\sigma) \leq OL$	$BL \leq (700-3\sigma) < X < (1300+3\sigma) \leq OL$	$BL \leq (500-3\sigma) < X < (1500+3\sigma) \leq OL$
Hg	$BL \leq (700-3\sigma) < X < (1300+3\sigma) \leq OL$	$BL \leq (700-3\sigma) < X < (1300+3\sigma) \leq OL$	$BL \leq (500-3\sigma) < X < (1500+3\sigma) \leq OL$
Br	$BL \leq (300-3\sigma) < X$	Not applicable	$BL \leq (250-3\sigma) < X$
Cr	$BL \leq (700-3\sigma) < X$	$BL \leq (700-3\sigma) < X$	$BL \leq (500-3\sigma) < X$

- (b) If the maximum allowed level restricts PBB/PBDE and Cr(VI) rather than Br and Cr, the exceptions are the XRF determinations of Br and Cr. If the quantitative results for the elements Br and/or are higher than the limit (for Br calculated based on the stoichiometry of Br in the most common congeners of PBB/PBDE), the sample is "inconclusive".
- (c) Results are obtained by EDXRF for primary screening, LOD = Limit of Detection, BL = Below Limit, OL= Over Limit, IN (The symbol X marks the region)=Inconclusive, where further investigation is necessary, and further chemical testing by ICP-OES (for Cd, Pb, Hg), UV-Vis (for Cr(VI)) and GC-MS (for PBBs/PBDEs) are recommended to be performed.
- (d) The EDXRF screening test for RoHS elements – The reading may be different to the actual content in the sample be of non-uniformity composition.
- (2) Screening results of Phthalates (PHTH) are for primary screening, and further chemical testing by GC-MS (for DBP, BBP, DEHP and DIBP) are recommended to be performed if the concentration exceeds the below warning value (unit: mg/kg).

Test Items	CAS No.	Polymer/ Composite Materials
Dibutyl Phthalate (DBP)	84-74-2	$BL \leq 600 < X$
Benzylbutyl Phthalate (BBP)	85-68-7	$BL \leq 600 < X$
Bis(2-ethylhexyl) Phthalate (DEHP)	117-81-7	$BL \leq 600 < X$
Diisobutyl Phthalate (DIBP)	84-69-5	$BL \leq 600 < X$

- (3) Interpretation of results by chemical tests:
 (a) mg/kg = 0.0001%, MDL=Method detection Limit, ND = Not Detected (<MDL), --- = Not Applicable.
 (b) Unit and MDL in wet chemical test

Test Items	Pb	Cd	Hg	DBP	BBP	DEHP	DIBP
Unit	mg/kg	mg/kg	mg/kg	mg/kg	mg/kg	mg/kg	mg/kg
MDL	10	10	10	100	100	100	100

The MDL for single compound of PBBs and PBDEs is 100 mg/kg,
 MDL of Cr(VI) for polymer, composite and leather sample is 10 mg/kg.
 MDL of Cr(VI) for metal sample is 0.10 µg/cm².

- (c) ▼ =Metal sample
- The sample is positive for Cr(VI) if the Cr(VI) concentration is greater than 0.13 µg/cm². The sample coating is considered to contain Cr(VI).
 - The sample is negative for Cr(VI) if Cr(VI) is ND (concentration less than 0.10 µg/cm²). The coating is considered a non-Cr(VI) based coating
 - The result between 0.10 µg/cm² and 0.13 µg/cm² is considered to be inconclusive-unavoidable coating variations may influence the determination



Information on storage conditions and production date of the tested sample is unavailable and thus Cr(VI) results represent status of the sample at the time of testing.

- (4) Restricted substances and maximum concentration values tolerated by weight in homogeneous materials under RoHS Directive: Cd: 0.01%, Pb/Hg/Cr(VI)/PBBs/PBDEs/DEHP/DBP/BBP/DIBP: 0.1%. The limit is quoted from RoHS Directive (EU) 2015/863.
- (5) IEC 62321 series is equivalent to EN 62321 series.
- (6) According to the declaration from applicant, the materials of other parts in Model "PE90" are the same as those in Model "SL68", and the results of Model "SL68" for support the results of other parts in Model "PE90". The applicant will take the responsibility of all discrepancy and risk.
- (7) * =Considering insufficient sample amount, the Method Detection Limit (MDL) is raised appropriately.

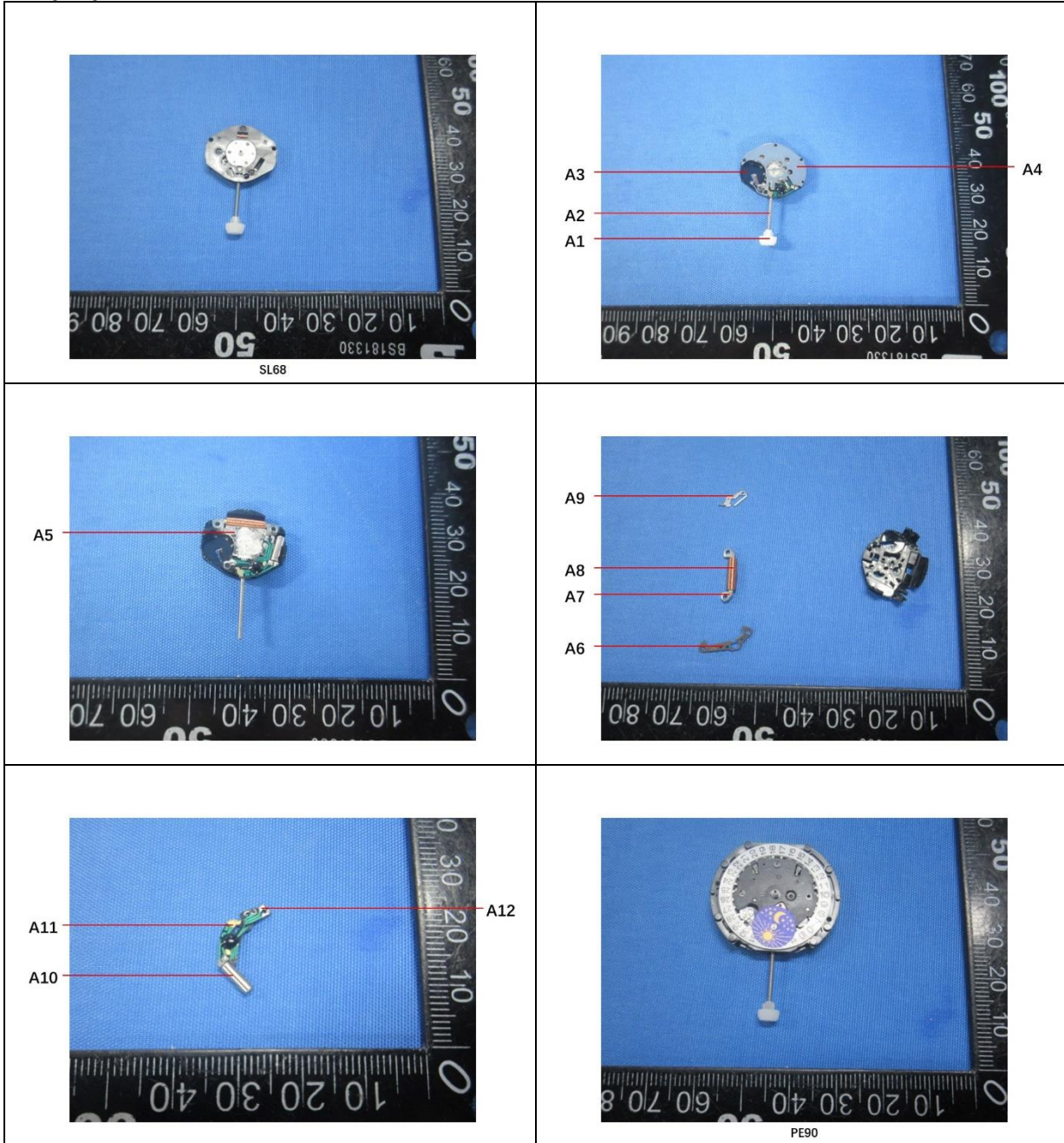
The location of performance of the laboratory activities: A. No.198, Kezhu Road, Science City, Economic & Technological Development Area, Guangzhou, Guangdong; B. Room 101, Building 3, No.1501, Kaichuang Avenue, Huangpu District, Guangzhou, Guangdong

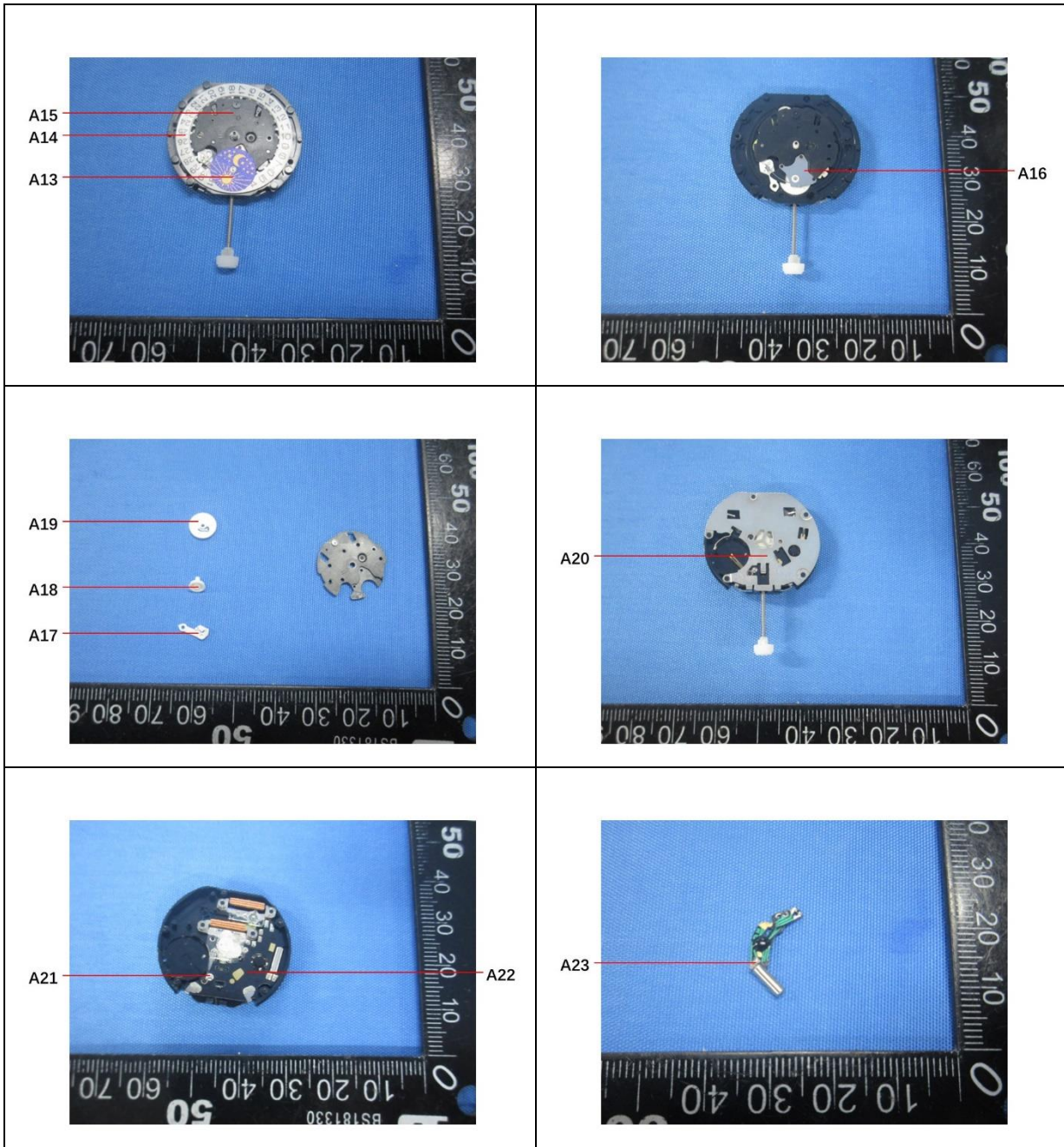
Unless otherwise stated, the decision rule for conformity reporting is based on Binary Statement for Simple Acceptance Rule ($w=0$) stated in ILAC-G8:09/2019.



Unless otherwise agreed in writing, this document is issued by the Company subject to its General Conditions of Service printed overleaf, available on request or accessible at <https://www.sgs.com/en/Terms-and-Conditions>. Attention is drawn to the limitation of liability, indemnification and jurisdiction issues defined therein. Any holder of this document is advised that information contained hereon reflects the Company's findings at the time of its intervention only and within the limits of Client's instructions, if any. The Company's sole responsibility is to its Client and this document does not exonerate parties to a transaction from exercising all their rights and obligations under the transaction documents. This document cannot be reproduced except in full, without prior written approval of the Company. Any unauthorized alteration, forgery or falsification of the content or appearance of this document is unlawful and offenders may be prosecuted to the fullest extent of the law. Unless otherwise stated the results shown in this test report refer only to the sample(s) tested.
Attention: To check the authenticity of testing /inspection report & certificate, please contact us at telephone: (86-755) 8307 1443, or email: CN.Doccheck@sgs.com

Sample photos:





SGS authenticate the photo on original report only

*** End of Report ***

